

RCOR1 antibody - middle region
Rabbit Polyclonal Antibody
Catalog # AI10129**Specification**

RCOR1 antibody - middle region - Product Information

Application	WB, IHC
Primary Accession	O9UKL0
Other Accession	O9UKL0 , NP_055971 , NM_015156
Reactivity	Human, Mouse, Rat, Dog, Guinea Pig, Horse, Bovine
Predicted	Human, Mouse, Pig, Chicken, Dog, Guinea Pig, Horse, Bovine
Host	Rabbit
Clonality	Polyclonal
Calculated MW	53 kDa KDa

RCOR1 antibody - middle region - Additional Information**Gene ID** 23186**Alias Symbol** COREST, KIAA0071, RCOR**Other Names**

REST corepressor 1, Protein CoREST, RCOR1, KIAA0071, RCOR

Target/Specificity

RCOR1 is a functional corepressor required for regulation of neural-specific gene expression. The RCOR gene encodes a functional corepressor required for regulation of neural-specific gene expression. The RCOR gene encodes a functional corepressor required for regulation of neural-specific gene expression. [supplied by OMIM]. Publication Note: This RefSeq record includes a subset of the publications that are available for this gene. Please see the Entrez Gene record to access additional publications.

Format

Liquid. Purified antibody supplied in 1x PBS buffer with 0.09% (w/v) sodium azide and 2% sucrose.

Reconstitution & Storage

Add 50 ul of distilled water. Final anti-RCOR1 antibody concentration is 1 mg/ml in PBS buffer with 2% sucrose. For longer periods of storage, store at -20°C. Avoid repeat freeze-thaw cycles.

Precautions

RCOR1 antibody - middle region is for research use only and not for use in diagnostic or therapeutic procedures.

RCOR1 antibody - middle region - Protein Information**Name** RCOR1

Synonyms KIAA0071, RCOR

Function

Essential component of the BHC complex, a corepressor complex that represses transcription of neuron-specific genes in non-neuronal cells. The BHC complex is recruited at RE1/NRSE sites by REST and acts by deacetylating and demethylating specific sites on histones, thereby acting as a chromatin modifier. In the BHC complex, it serves as a molecular beacon for the recruitment of molecular machinery, including MeCP2 and SUV39H1, that imposes silencing across a chromosomal interval. Plays a central role in demethylation of Lys-4 of histone H3 by promoting demethylase activity of KDM1A on core histones and nucleosomal substrates. It also protects KDM1A from the proteasome. Component of a RCOR/GFI/KDM1A/HDAC complex that suppresses, via histone deacetylase (HDAC) recruitment, a number of genes implicated in multilineage blood cell development and controls hematopoietic differentiation.

Cellular Location

Nucleus {ECO:0000255|PROSITE-ProRule:PRU00512, ECO:0000255|PROSITE-ProRule:PRU00624, ECO:0000269|PubMed:10734093, ECO:0000269|PubMed:15897453}. Note=Upon infection by HSV-1, it is partially translocated into the cytoplasm in an HSV-1-dependent manner

Tissue Location

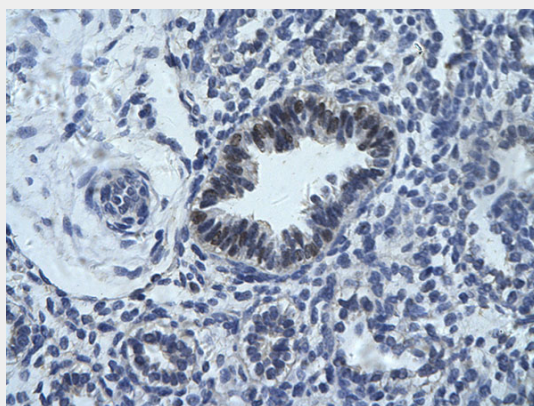
Ubiquitously expressed.

RCOR1 antibody - middle region - Protocols

Provided below are standard protocols that you may find useful for product applications.

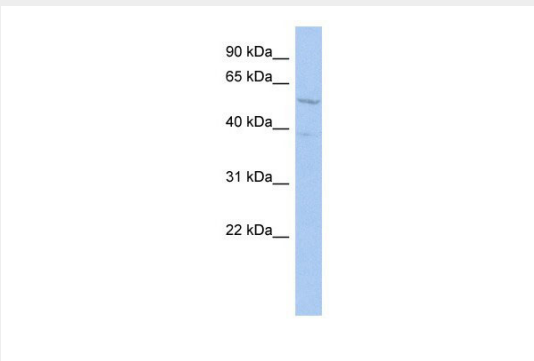
- [Western Blot](#)
- [Blocking Peptides](#)
- [Dot Blot](#)
- [Immunohistochemistry](#)
- [Immunofluorescence](#)
- [Immunoprecipitation](#)
- [Flow Cytometry](#)
- [Cell Culture](#)

RCOR1 antibody - middle region - Images



Human Lung
Rabbit Anti-RCOR1 Antibody
Paraffin Embedded Tissue: Human bronchiole epithelium
Cellular Data: Epithelial cells of renal tubule

Antibody Concentration: 4.0-8.0 µg/ml
Magnification: 400X



90 kDa
65 kDa
40 kDa
31 kDa
22 kDa

RCOR1 antibody - middle region (AI10129) in Human HT1080 cells using Western Blot
WB Suggested Anti-RCOR1 Antibody Titration: 0.2-1 µg/ml
ELISA Titer: 1:62500
Positive Control: HT1080 cell lysate
RCOR1 is supported by BioGPS gene expression data to be expressed in HT1080

RCOR1 antibody - middle region - Background

This is a rabbit polyclonal antibody against RCOR1. It was validated on Western Blot using a cell lysate as a positive control. Abgent strives to provide antibodies covering each member of a whole protein family of your interest. We also use our best efforts to provide you antibodies recognize various epitopes of a target protein. For availability of antibody needed for your experiment, please inquire (sales@abgent.com).